

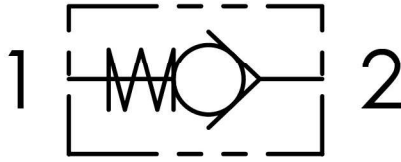
GCV CHECK VALVES - ÇEK VALFLER



Sipariş Kodu / Order Code

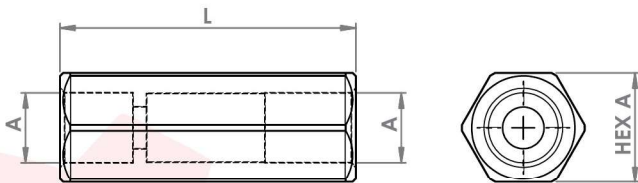
GCV	014	B	1
Tip / Type	Ebat / Size	Diş Tipi / Thread Type	Yay Kuvveti / Spring Force
GCV	1/4"	B = BSPP N = NPT U = UNF	1 = 1 Bar 2 = 3 Bar 3 = 6 bar
	3/8"		
	1/2"		
	3/4"		
	1"		
	1 1/4"		
	11/2"		

Hidrolik Şema / Hydraulic Circuit

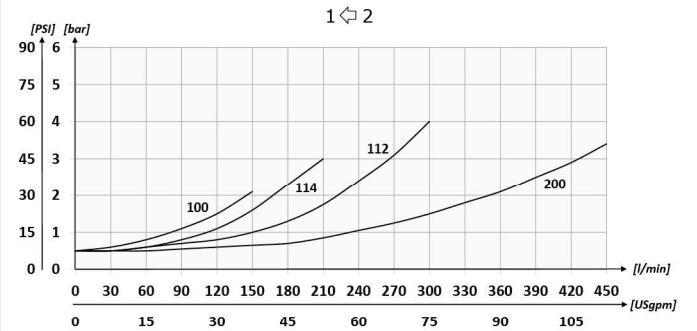
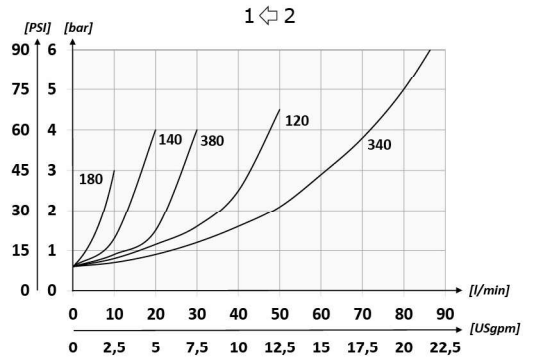


Direkt Hat Üzerine Montaja Uygun / Suitable For Direct In-Line Installation

Gövde Malzemesi - Body Material	Çelik / Steel DIN1.0715
Mineral Yağ - Mineral Oil	ISO 6743/4 (DIN 51524)
Yağ Viskozitesi - Oil Viscosity	10-500 mm ² /s (10 to 420 cSt)
Yağ Sıcaklığı - Oil Temperature	(-20°C +80°C)
Ortam Sıcaklığı - Environment Temperature	(-20°C +50°C)
İç Kaçak - Leakage	0 - 0.25 mm ³ /min



Performans / Performance



Teknik Özellikler / Technical Specifications

S.N.	Tip / Type	A	Q max (l/min)	P max (Bar)	L (mm)	Hex A (mm)	Ağırlık / Weight (kg)
1	GCV014B1	BSPP 1/4	15	400	55	19	0,1
2	GCV038B1	BSPP 3/8	30		65	24	0,18
3	GCV012B1	BSPP 1/2	50		75	27	0,23
4	GCV034B1	BSPP 3/4	90		86,5	36	0,45
5	GCV100B1	BSPP 1	150	350	110	41	0,73
6	GCV114B1	BSPP 1 1/4	200		123	55	1,5
7	GCV112B1	BSPP 1 1/2	300		138	60	1,85