

HYDRAULICKÝ ROZVADĚČ CETOP7 (S)DSHG-04-***

**ROZMĚRY**

str. 2/7

PRŮTOKOVÝ DIAGRAM

str. 3/7

SPECIFIKACE

str. 4/7

OBJEDNACÍ KLÍČ

str. 6/7

**PRO VÍCE PODROBNĚJŠÍCH TECHNICKÝCH
INFORMACÍ KATALOG ZDE:**

<https://www.yuken.cz/ke-stazeni>

INTERFLUID spol. s r.o.

1.Máje 3381/106

Ostrava Moravská Ostrava, 703 00

Otevírací doba: 7:00 - 15:30

(po-pá mimo svátky)

Kontakty:

Tel.: + 420 595 953 879

Fax: + 420 595 955 908

interfluid@interfluid.com

obchod@interfluid.com

Bankovní spojení:

CZK: 27-7357520297 / 0100

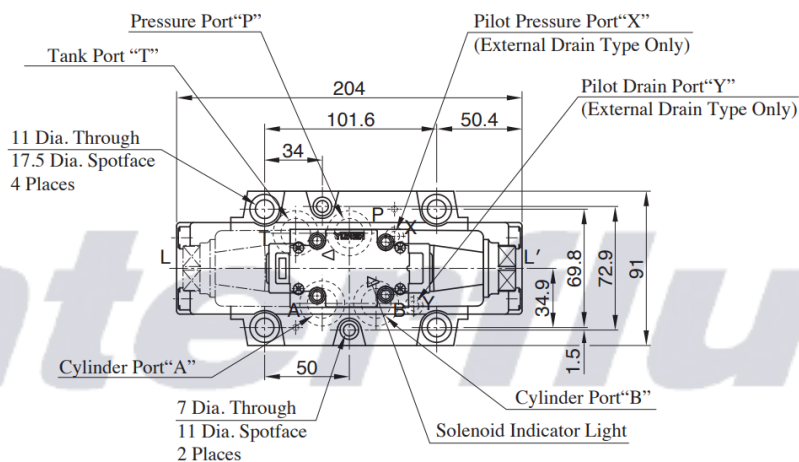
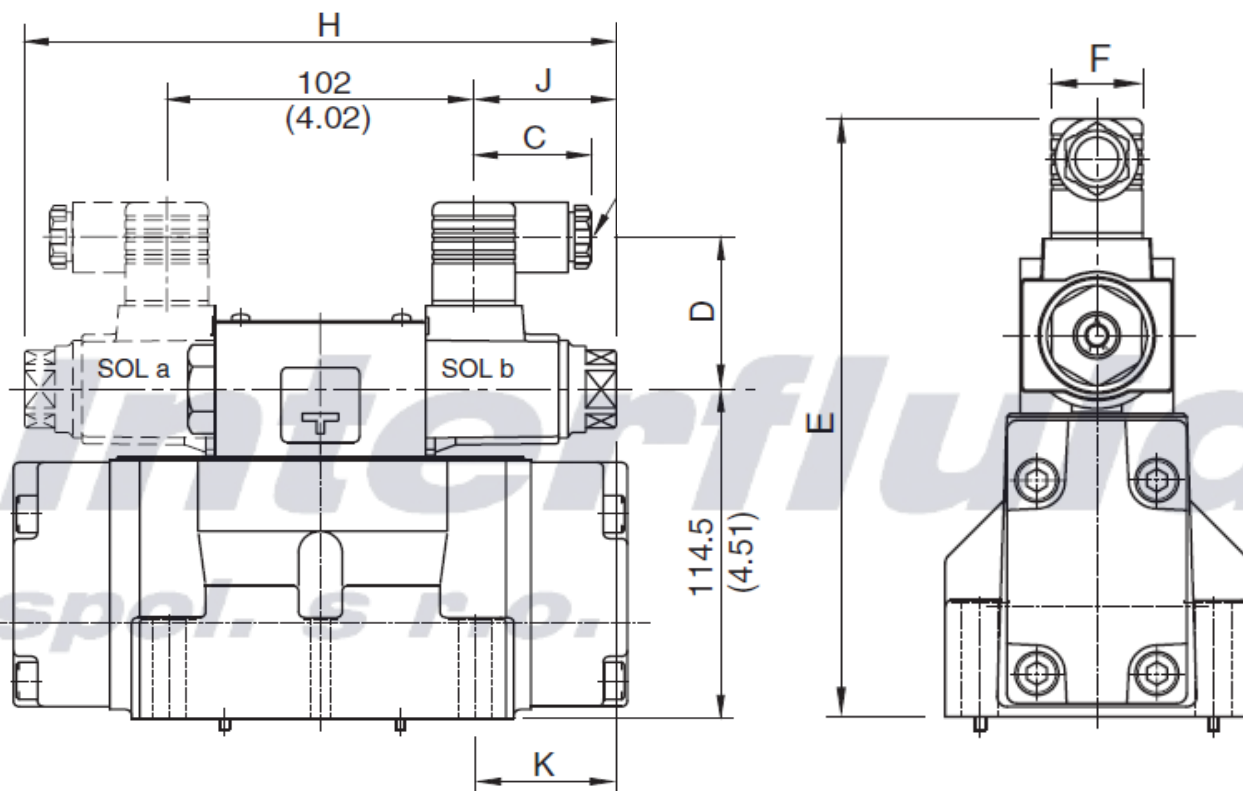
IBAN : CZ5601000000277357520297

EUR:34278-522852761 / 0100

IBAN : CZ8301000342780522852761

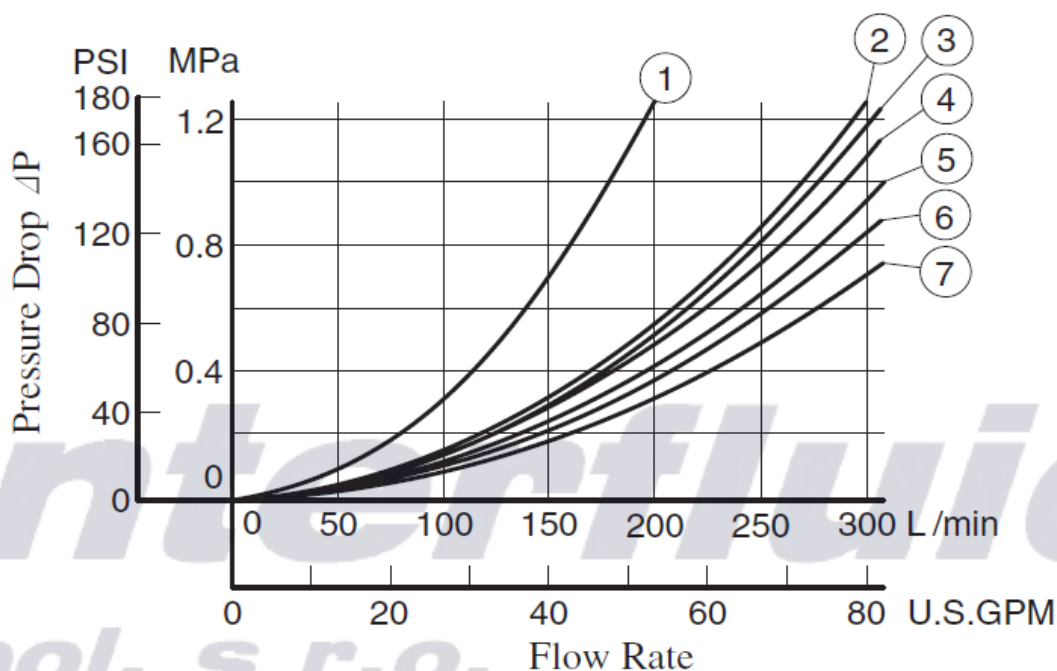
www.interfluid.comPartner v oblasti hydrauliky a
pneumatiky.Už více jak 20 let tvoříme řešení na
míru vašim potřebám.

ROZMĚRY



Model	C	D	E	F	H	J	K
(S-)DSHG-04-***-A*-N/N1	39	53	173,5	27,5	196,4	47,2	45,6
(S-)DSHG-04-***-D*-N/N1	39	64	184,5	27,5	204,4	51,2	49,6
(S-)DSG-01-***-R*-N	53	57,2	187,6	34			

PRŮTOKOVÝ DIAGRAM


DSHG-04

Spool Type	Pressure Drop Curve Numbers					Spool Type	Pressure Drop Curve Numbers				
	P→A	B→T	P→B	A→T	P→T		P→A	B→T	P→B	A→T	P→T
2	(5)	(4)	(5)	(6)	—	60	(7)	(5)	(7)	(7)	(2)
3	(5)	(3)	(5)	(5)	(7)	7	(5)	(4)	(5)	(6)	—
4	(5)	(3)	(5)	(5)	—	9	(5)	(4)	(5)	(6)	—
40	(5)	(4)	(5)	(6)	—	10	(5)	(2)	(5)	(6)	—
5	(7)	(4)	(5)	(5)	(5)	11	(6)	(4)	(5)	(6)	—
6	(5)	(3)	(5)	(6)	(1)	12	(5)	(4)	(5)	(5)	—

S-DSHG-04

Spool Type	Pressure Drop Curve Numbers					Spool Type	Pressure Drop Curve Numbers				
	P→A	B→T	P→B	A→T	P→T		P→A	B→T	P→B	A→T	P→T
2	(2)	(2)	(2)	(4)	—	60	(6)	(4)	(6)	(7)	(2)
4	(2)	(3)	(2)	(5)	—	10	(2)	(2)	(2)	(4)	—
40	(2)	(4)	(2)	(6)	—	12	(2)	(2)	(2)	(5)	—

SPECIFIKACE

● Three Positions

Spool Type	Spring Centred					
	Graphic Symbol	Maximum Flow L/min (U.S.GPM)				
	Model Numbers	10 MPa (1450 PSI)	16 MPa (2320 PSI)	25 MPa (3630 PSI)	31.5 MPa (4570 PSI)	
"2"		DSHG-04-3C2	300 (79.3)	300 (79.3)	200 (52.8)	145 (38.3)
		(S-)DSHG-04-3C2	300 (79.3)	250 (66.1)	120 (31.7)	110 (29.1)
"3"		DSHG-04-3C3	300 (79.3)	300 (79.3)	300 (79.3)	300 (79.3)
"4"		DSHG-04-3C4	300 (79.3)	300 (79.3)	250 (66.1)	165 (43.6)
		(S-)DSHG-04-3C4	300 (79.3)	300 (79.3)	140 (37.0)	110 (29.1)
"40"		DSHG-04-3C40	300 (79.3)	300 (79.3)	200 (52.8)	145 (38.3)
		(S-)DSHG-04-3C40	300 (79.3)	250 (66.1)	120 (31.7)	110 (29.1)
"5"		DSHG-04-3C5	250 (66.1)	250 (66.1)	245 (64.7)	245 (64.7)
"6"		DSHG-04-3C6	300 (79.3)	260 (68.7)	245 (64.7)	235 (62.1)
"60"		DSHG-04-3C60	300 (79.3)	300 (79.3)	300 (79.3)	300 (79.3)
		(S-)DSHG-04-3C60	300 (79.3)	300 (79.3)	300 (79.3)	300 (79.3)
"7"		DSHG-04-3C7	300 (79.3)	300 (79.3)	200 (52.8)	145 (38.3)
"9"		DSHG-04-3C9	300 (79.3)	300 (79.3)	280 (74.0)	250 (66.1)
		(S-)DSHG-04-3C9	300 (79.3)	250 (66.1)	120 (31.7)	110 (29.1)
"10"		DSHG-04-3C10	300 (79.3)	300 (79.3)	200 (52.8)	150 (39.6)
		(S-)DSHG-04-3C10	300 (79.3)	250 (66.1)	120 (31.7)	110 (29.1)
"11"		DSHG-04-3C11	300 (79.3)	260 (68.7)	160 (42.3)	140 (37.0)
"12"		DSHG-04-3C12	300 (79.3)	280 (74.0)	170 (44.9)	135 (35.7)
		(S-)DSHG-04-3C12	300 (79.3)	250 (66.1)	120 (31.7)	110 (29.1)

Model	Max. Flow L/min (U.S.GPM)	Max. Operating Pressure MPa	Max. Pilot Pressure MPa	Min. Required Pilot Pres. MPa	Max. T-Line Back Pressure MPa		Max. Change over Frequency Cycles/Min (min-1)			Mass Kg
					Ext. Drain	Int. Drain	AC	DC	R	
(S-)DSHG-04-3C*-52/5290	300	31,5	25	0,8	21	16	120	120	120	8,5
(S-)DSHG-04-2N*-52/5290										8,5
(S-)DSHG-04-2B*-52/5290										8

INTERFLUID spol. s r.o.
 1.Máje 3381/106
 Ostrava Moravská Ostrava, 703 00
 Otevírací doba: 7:00 - 15:30
 (po-pá mimo svátky)

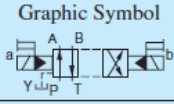
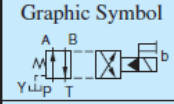





Kontakty:
 Tel.: + 420 595 953 879
 Fax: + 420 595 955 908
 interfluid@interfluid.com
 obchod@interfluid.com

Bankovní spojení:
 CZK: 27-7357520297 / 0100
 IBAN : CZ560100000277357520297
 EUR:34278-522852761 / 0100
 IBAN : CZ8301000342780522852761

www.interfluid.com
 Partner v oblasti hydrauliky a
 pneumatiky.
 Už více jak 20 let tvoříme řešení na
 míru vašim potřebám.

SPECIFIKACE

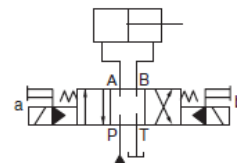
● Two Positions

Spool Type	No-Spring					Spring Offset				
	Graphic Symbol 	Maximum Flow L/min (U.S.GPM)				Graphic Symbol 	Maximum Flow L/min (U.S.GPM)			
	Model Numbers	10 MPa (1450 PSI)	16 MPa (2320 PSI)	25 MPa (3630 PSI)	31.5 MPa (4570 PSI)	Model Numbers	10 MPa (1450 PSI)	16 MPa (2320 PSI)	25 MPa (3630 PSI)	31.5 MPa (4570 PSI)
"2" 	(S-)DSHG-04-2N2	300 (79.3)	300 (79.3)	300 (79.3)	300 (79.3)	(S-)DSHG-04-2B2	300 (79.3)	300 (79.3)	300 (79.3)	300 (79.3)
"3" 	DSHG-04-2N3	300 (79.3)	300 (79.3)	300 (79.3)	300 (79.3)	DSHG-04-2B3	300 (79.3)	300 (79.3)	300 (79.3)	300 (79.3)
"4" 	(S-)DSHG-04-2N4	300 (79.3)	300 (79.3)	300 (79.3)	300 (79.3)	(S-)DSHG-04-2B4	300 (79.3)	300 (79.3)	300 (79.3)	300 (79.3)
"40" 	(S-)DSHG-04-2N40	300 (79.3)	300 (79.3)	300 (79.3)	300 (79.3)	(S-)DSHG-04-2B40	300 (79.3)	300 (79.3)	300 (79.3)	300 (79.3)
"7" 	DSHG-04-2N7	300 (79.3)	300 (79.3)	300 (79.3)	300 (79.3)	DSHG-04-2B7	300 (79.3)	300 (79.3)	300 (79.3)	300 (79.3)

Notes: 1. Max flow described above shown value at pilot pressure more than 0.8 MPa (120 PSI).

2. Max. flow in the table above represents the value in the flow condition of P → A → B → T (or P → B → A → T) as shown in the circuit diagram right.

In case the valve is used in the condition that either A or B port is blocked, the maximum flow differs according to a hydraulic circuit, therefore, please consult us for details.



Interfluid
spol. s r.o.

INTERFLUID spol. s r.o.

1. Máje 3381/106
Ostrava Moravská Ostrava, 703 00
Otevírací doba: 7:00 - 15:30
(po-pá mimo svátky)

Kontakty:

Tel.: + 420 595 953 879
Fax: + 420 595 955 908
interfluid@interfluid.com
obchod@interfluid.com

Bankovní spojení:

CZK: 27-7357520297 / 0100
IBAN : CZ5601000000277357520297
EUR: 34278-522852761 / 0100
IBAN : CZ8301000342780522852761

www.interfluid.com

Partner v oblasti hydrauliky a pneumatiky.
Už více jak 20 let tvoříme řešení na míru vašim potřebám.

OBJEDNÁČÍ KLÍČ 1/2

Model Number Designation

F-	S-	DSHG	-06	-2	B	2	A	-C2	-E	T	
Special Seals	Type	Series Number	Valve Size	No. of Valve Position	Spool-Spring Arrangement	Spool Type	Special Two Position Valve	Models with Pilot Choke Valve	Pilot Connection	Drain Connection	
F: For Phosphate Ester Type Fluids (Omit if not required)	None: Standard Type	DSHG: Solenoid Controlled Pilot Operated Directional Valve, Sub-plate Mounting	01	3	C: Spring Centred	2, 3, 4 40, 5, 60 7, 9, 10 11, 12	—	—	C1: With C1 Choke C2: With C2 Choke C1C2: With C1 & C2 Choke (Omit if not required)	None: Internal Pilot	None: External Drain
				2	B: Spring Offset	2, 3, 4 40, 7	—				
			03	3	C: Spring Centred	2, 3, 4 40, 5, 60 7, 9, 10 11, 12	—				
				2	N: No-Spring	2 3 4 40 7	—				
			04	3	C: Spring Centred	2, 4, 40 60, 10, 12 (3, 5, 6) ^{*1} (7, 9, 11)	—				
				2	N: No-Spring	2, 4, 40 (3, 7) ^{*1}	A ^{*2} (Omit if not required)				
	None: Standard Type	S: Shockless Type	06	3	H: Pressure Centred	2, 4, 40 60, 10, 12 (3, 5, 6) ^{*1} (7, 9, 11)	—	(Omit if not required)			
					C: Spring Centred	2, 4, 40 (3, 7) ^{*1}	A ^{*2} (Omit if not required)				
				10	2	N: No-Spring	2, 4, 40 (3, 7) ^{*1}		A ^{*2} (Omit if not required)		
					B: Spring Offset	2, 4, 40 (3, 7) ^{*1}	A ^{*2} B ^{*2} (Omit if not required)				

Note: In spool type "3", "5", "6", "60", and "7", the combination applicable between pilot system and drain system is as described in the table below.

PŘEDBĚŽNÁ DOLOŽKA:

Tento technický list byl vypracován dle nejlepších vědomostí a s obzvláštní pečlivostí. Poskytované informace se zakládají na praktických zkušenostech, interních zkouškách a odrážejí naši současnou úroveň znalostí. Jsou určeny pouze pro informaci a nepředstavují záruku vlastností výrobku nebo jeho vhodnosti pro konkrétní použití. Za chyby tisku a norem a za omyly nelze převzít jakoukoliv záruku. Platí naše Všeobecné obchodní podmínky

INTERFLUID spol. s r.o.

 1. Máje 3381/106
 Ostrava Moravská Ostrava, 703 00
 Otevírací doba: 7:00 - 15:30
 (po-pá mimo svátky)

Kontakty:

 Tel.: + 420 595 953 879
 Fax: + 420 595 955 908
 interfluid@interfluid.com
 obchod@interfluid.com

Bankovní spojení:

 CZK: 27-7357520297 / 0100
 IBAN : CZ560100000277357520297
 EUR: 34278-522852761 / 0100
 IBAN : CZ8301000342780522852761

www.interfluid.com

 Partner v oblasti hydrauliky a pneumatiky.
 Už více jak 20 let tvoříme řešení na míru vašim potřebám.

OBJEDNÁČÍ KLÍČ 2/2

-R2	-A100	-C	-H	-N	-53	-*	-L
Spool Control Modification (Omit if not required) ^{★3}	Coil Type	Manual Override of Pilot Valve	Built-in Orifice for Pilot Line	Type of Electrical Conduit Connection	Design Number	Design Standard	Models with Reverse Mtg. of Solenoid
—	AC: A100, A200 A120, A240		—		14	None: Japanese Standard "JIS"	— L (Omit if not required)
R2: With Stroke Adjustment, Both Ends RA: With Stroke Adjustment, Port "A" End RB: With Stroke Adjustment, Port "B" End	DC: D12, D24 D48 AC → DC R100, R200	None : Manual Override Pin	—	None: Terminal Box Type	14	90: N. American Design Standard	— L (Omit if not required)
	AC: A100, A200 A120, A240	C: Push Button & Lock Nut	—	N: Push-in Connector Type	52	None: Japanese Standard "JIS" & European Design Standard	— L (Omit if not required)
R2: With Stroke Adj., Both Ends RA: With Stroke Adj., Port "A" End RB: With Stroke Adj., Port "B" End P2: With Pilot Piston, Both Ends PA: With Pilot Piston, Port "A" End PB: With Pilot Piston, Port "B" End	DC: D12, D24 D48 AC → DC R100, R200		— H: Refer to ★5	N1: Push-in Connector with Indicator Light	53 43	80: European Design Standard (Applicable only for DSHG-01) 90: N. American Design Standard	— L (Omit if not required)

★1. Shekless type (S-DSHG) are not available for spool type marked ().

★2. As for the details of the valve using the neutral position and the side position (either SOL a or SOL b side), please refer to page 391. Furthermore, the spool types other than "2", "4", "40" (3, 7) are also available.

★3. In spool-spring arrangement "H" (Pressure centred models), the valves with stroke adjustment (R*) and pilot-piston (P*) are not available.

★4. NI stands for Plug-in connector with solenoid indicator light. NI is not available for R-type solenoids.

★5. In spool-spring arrangement "H" (pressure centred models), in case the pilot pressure is more than 10 MPa (1450 PSI), please specify that the valve should have the built-in orifice to the pilot line.